



FOREST CONTRACTS

contract & bespoke furniture

Hotels • Restaurants • Offices • Hospitals • Residential



FOREST CONTRACTS
contract & bespoke furniture



INTRODUCTION

FOREST CONTRACTS IS A MARKET LEADER IN THE DESIGN AND MANUFACTURE OF HOTEL FURNITURE.

We are proud to be one of the preferred suppliers for Hilton, IHG and other renowned hotel groups.

As well as having this comprehensive client list, we also supply beautifully crafted furniture to independent hotels, bars, restaurants, hospitals, offices and domestic developments.





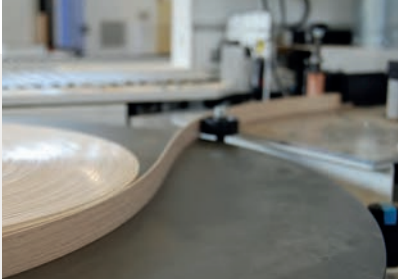
DESIGN

USING THE LATEST SOLIDWORKS CAD TECHNOLOGY OUR EXPERIENCED DESIGN TEAM CREATE STUNNING SCHEMES REFLECTING YOUR NEEDS AND SPECIFICATIONS, ENSURING ANY DESIGN INTENT IS MANUFACTURED AND INSTALLED.

Efficiency is ensured by using 3D modelling software to convert approved drawings into production data, which produces parts lists and programs our machinery.

As part of any client consultation process, we provide concept visuals, drawings and samples to guarantee our proposals meet your requirements. We can also offer value for money engineering alternatives without compromising the quality and aesthetic of your furniture.





FACTORY & MANUFACTURE

FOREST CONTRACTS HAS RECENTLY RE-LOCATED TO A NEW 18,000 SQUARE FEET FACTORY SITE IN IDYLIC ESSEX COUNTRYSIDE.

This beautiful rural location, nestled amongst fields and trees, epitomises the philosophy of our business, and positions us perfectly for working in the centre of London, as well as offering easy access to projects further afield.

Our workforce of twenty-six live locally and a number have been valued members of the Forest Contracts' family for many years.

As part of the re-location we have invested in the latest machinery, enabling us to meet the specialised and complex requirements of our clients, designers and craftsmen. Our high-performance machinery includes the following:

- HOMAG Panel dividing saw SAWTEQ B-300
- HOMAG Storage System STORETEQ S-200
- HOMAG Vertical CNC Processing Center DRILLTEQ-V500
- HOMAG Return conveyor LOOPTEQ O-300
- HOMAG Wide-Belt Sanding machine SANDTEQ W-100

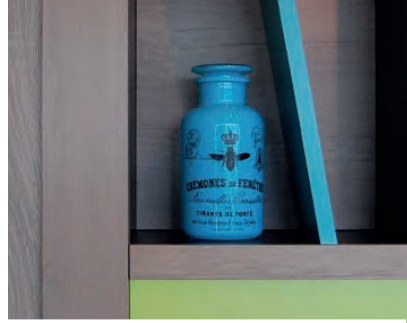
Whilst this investment is vital to facilitate the growth of the company and protect the future of our workforce, we also recognise the importance of traditional cabinet making methods. We, therefore, employ time served cabinet makers, offering customers both high volume and bespoke products.



INSTALLATION

WE UNDERSTAND THE INSTALLATION OF FURNITURE IS IMPORTANT AND THE SIGNIFICANT ROLE IT PLAYS IN THE SUCCESSFUL COMPLETION OF A PROJECT.

Our experienced team of Project Managers and Fitters have the skills required for an ever-changing environment, including the handing over of completed bedrooms within tight timelines or liaising with mechanical and engineering contractors to guarantee a bar is ready for an important function. They are an integral part of the team, helping create the good reputation for which Forest Contracts has become known.



SOUTH KENSINGTON
CURIO COLLECTION *by* HILTON



100 Queen's Gate hotel recognised as one of the first 'Curio Collection by Hilton' in the UK. Crimson Hotels required high quality furniture with a bespoke aesthetic.

The hotel comprises of a row 1870's townhouses, this Victorian property is located in the exclusive area of South Kensington close to the Natural History Museum and Hyde park.

Over a period of eighteen months, Forest Contracts provided the joinery for 202 hotel bedrooms, including a number of design variations for a range of rooms. Due to the age of the property, the rooms varied in size and space, so each room required individual attention to ensure furniture fitted correctly. And in order to create the look the client required we used a selection of different materials.



SOUTH KENSINGTON
CURIO COLLECTION *by* HILTON



WATERLOO
RUBY LUCY HOTEL



Lucy Hotel is the first hotel in the UK owned by the German Hoteliers Ruby Hotels. A new build development with RED Construction, it is located in Waterloo and comprises 76 bedrooms over four floors, with the ground floor hosting the public areas.

Forest Contracts manufactured and installed all the bedroom joinery, including the wall panelling, as well as the bar and reception, breakfast area and fixed seating. The bedroom joinery followed Ruby Hotels' brand standards, whilst the front of house was inspired by the rich circus and performance heritage for which the area is known.

WATERLOO
RUBY LUCY HOTEL



DOVER
HOLIDAY INN



Forest Contracts was involved in the renovation of this Holiday Inn located on the outskirts of Dover, comprising of 43 bedrooms and the public area joinery.

Meticulously following brand standards, our team created furniture which transformed a dated scheme into a contemporary space consisting of natural textures and bright colours.



DOVER
HOLIDAY INN



MANCHESTER
MARRIOTT VICTORIA & ALBERT HOTEL



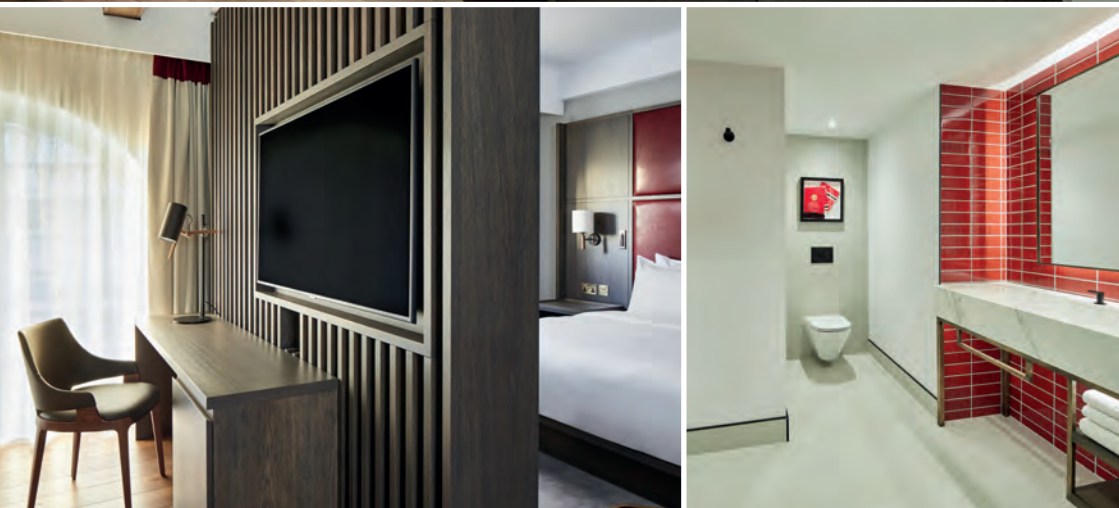
Forest Contracts was honoured to supply the joinery for two bespoke 'Manchester United Suites' which offer football fans from all over the world a chance to stay in the 'Theatre of Dreams'

Both suites are inspired by the changing rooms at Old Trafford and pay homage to the past and present icons of Manchester United.



FOREST CONTRACTS
contract & bespoke furniture

MANCHESTER
MARRIOTT VICTORIA & ALBERT HOTEL



HULL HOLIDAY INN EXPRESS



A well-established hotel in the centre of Hull was updated to comply with the new HIX brand standards.



The Forest Contracts' team, working with the Hotelier, drew upon their experience of completed schemes to ensure the rejuvenation of the public areas met brand standards, at a competitive price. The project included supplying new joinery and re-cladding of existing cabinetry as well as consultation on the interior finishes and fixtures of the scheme.

HULL
HOLIDAY INN EXPRESS



SHOREDITCH
VOSS STREET MEWS



Set in a wonderful mews road near Shoreditch High Street, Forest Contracts provided bespoke joinery in four newly built houses, comprising wardrobes, staircase storage, and media units.

High quality materials were used throughout including Japanese 'Shou Sugi Ban' charred timber. As the architect requested a small 'shadow gap' between the joinery and walls, and unusually tight angled wardrobes, each piece of joinery was templated on site, before being drawn up and manufactured.



FOREST CONTRACTS
contract & bespoke furniture

SHOREDITCH
VOSS STREET MEWS





Forest Contracts has been involved in three CHUCS restaurants across London, providing a range of luxurious joinery items and bespoke wall panelling.

This small boutique restaurant chain is influenced by opulent yacht interiors.

Our Installation team worked on site templating and tweaking the golden coloured timber furniture and high quality brass fittings to ensure a seamless fit.



CHELSEA | BELGRAVIA | KENSINGTON
CHUCS RESTAURANTS



STOCKTON
HAMPTON *by* HILTON



This is a new development, owned by the local council and located in the Northshore area of Teesside.

Forest Contracts was involved in the manufacture and installation of the vast public areas using a mixture of Corian, solid timber and various laminates. Additionally, floor-to-ceiling bookcase divider units break up the seating areas and provide display space.



FOREST CONTRACTS
contract & bespoke furniture

STOCKTON
HAMPTON *by* HILTON



FOREST CONTRACTS
contract & bespoke furniture

www.forestcontracts.co.uk
info@forestcontracts.co.uk

DROITWICH SPA
CHATEAU IMPNEY



Built in the style of a classic French Chateau in 1875, the hotel has an enchanting character with subtle nods to the Art Deco movement, inspiring the design for the restaurant and bar.

Forest Contracts was asked to design and supply the exclusive bar and wall panelling for the new basement restaurant. Due to the lack of natural light, lighting panels were introduced within the joinery to brighten the restaurant and make it appear more spacious.



FOREST CONTRACTS
contract & bespoke furniture

DROITWICH SPA
CHATEAU IMPNEY

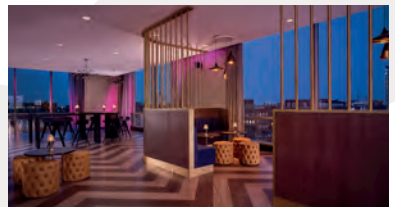


HULL
HILTON DOUBLE TREE



Being crowned 'City of Culture 2017' attracted a lot of investment into the City of Hull, and encouraged new developments such as the Hilton Double Tree.

Forest Contracts was proud to supply bespoke joinery for the public areas and Marco Pierre White Restaurant. The scheme included a reception area, three bars, multiple room dividers as well as the exclusive 'Sky Bar' which includes banquette seating.



HULL
HILTON DOUBLE TREE



VICTORIA
HILTON DOUBLE TREE



Bedroom

Located opposite Victoria station with links to Gatwick and Heathrow, the hotel is popular with travellers to the City of London.



Forest Contracts supplied and fitted upholstered headboards, minibar credenzas, bedside and desks for 232 rooms.

All our furniture follows the Hilton Double Tree high brand standards, and meets Hilton's accreditation.

VICTORIA
HILTON DOUBLE TREE



WEST END
HILTON DOUBLE TREE



Forest Contracts was involved in the manufacture and installation of 75 refurbished rooms in this four-star hotel located in the Bloomsbury district of London

The refurbishment included three different room schemes. All rooms included a fully upholstered headboard, bedside, desk and minibar credenza unit, constructed using contrasting timber finishes, elegant stone tops and solid timber cross banding.



WEST END
HILTON DOUBLE TREE



BATH
ABBNEY HOTEL



Forest Contracts proudly supplied the fixed seating, tables and chairs in the Abbey Hotel Restaurant.

This charming boutique hotel is located in the centre of Bath and is well known for its indulgent take on classic English dishes.

The deep buttoned upholstered seating offers a comfy, stylish area to sit and enjoy beautiful food.



BATH
ABBAY HOTEL



FOREST CONTRACTS
contract & bespoke furniture

www.forestcontracts.co.uk
info@forestcontracts.co.uk

CAMDEN HOLIDAY INN



Situated in vibrant Camden Town alongside the canal, this Holiday Inn was one of the first in Europe to roll out the new generation 'Open Lobby scheme' for which Holiday Inn is now known.

Forest Contracts manufactured and installed the whole of the Open Lobby area which included, reception counter; bar front and back, breakfast buffet stations and a number of large open bookcase units which have become the trademark of the Holiday Inn Open Lobby.



CAMDEN
HOLIDAY INN



WATFORD JUNCTION HOLIDAY INN



This well-established hotel with great transport links into London, offers a beautifully thought out Open Lobby Scheme providing an area for guests to work and relax.

Building on previous experience with similar projects, Forest Contracts supplied all the joinery items within the Open Lobby area, and ensured the exceptionally high brand standards were achieved.



FOREST CONTRACTS
contract & bespoke furniture

WATFORD JUNCTION
HOLIDAY INN



GENERATION FOUR
HOLIDAY INN EXPRESS



Forest Contracts have been included in a number of Holiday Inn Express projects, manufacturing and installing both bedroom case goods and bespoke public area joinery for the following sites:

- Grimsby
- St Albans
- Stockport
- Milton Keynes
- Exeter
- Burton
- Bristol
- Harlow
- Bath
- Cardiff
- Stratford
- Victoria
- Oxford
- Canterbury
- Hull
- Swindon



FOREST CONTRACTS
contract & bespoke furniture

GENERATION FOUR
HOLIDAY INN EXPRESS



CHESTER
HOTEL INDIGO



A contemporary boutique hotel located in the heart of historic Chester.



Forest Contracts was involved with the manufacture and installation of three unique room designs, across 75 guest rooms.

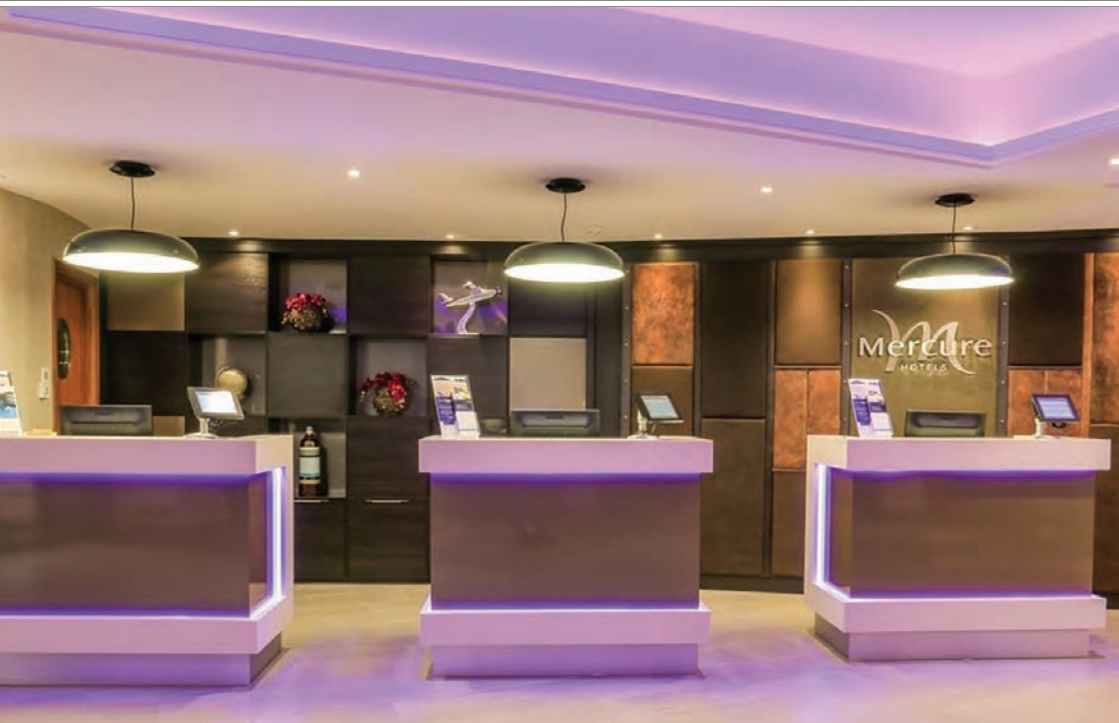
These bespoke rooms were designed to reflect the city's famous architecture and it being the home of the oldest racecourse in the UK.

The Standard, Deluxe and Premium Deluxe rooms featured headboards, bedside, desks and distinctive sliding doors to gain access to either the wardrobe or the tea /coffee making facilities.

CHESTER
HOTEL INDIGO



LONDON HEATHROW
MERCURE HOTEL



Forest Contracts was proud to deliver the public area joinery for one of the premier hotels near London Heathrow Airport.

Our joinery package consisted of reception pods, feature walls, bar area, breakfast buffet counters, fixed seating and Open Lobby bookcases.

In order to create a relaxing and contemporary interior, a myriad of materials was used, including Corian, stone and specialist laminates.

LONDON HEATHROW
MERCURE HOTEL



LOUGHTON
MISTERTON KITCHEN



Located on the edge of Epping Forest, this spacious new build includes a large open plan kitchen and living area.

Our designers worked closely with the developer to ensure the bespoke kitchen provided the most visually stunning solution possible.

Painted shaker in-frame doors with contrasting timber internals provide a classic yet contemporary look, whilst the complementary colour of the central island makes it a feature of the kitchen.

Full height larder units either side of the American fridge-freezer provide plenty of storage space and glazed cabinets in the island allow glassware to be displayed elegantly.



FOREST CONTRACTS
contract & bespoke furniture

LOUGHTON
MISTERTON KITCHEN



LONDON HEATHROW
NOVOTEL HOTEL



One of the closest hotels to London Heathrow Airport, this Novotel attracts many travellers, not only because of its location but also for the renowned facilities, making it a perfect place to relax prior to flying.

Forest Contracts supplied many of the bespoke public area joinery items, the most notable being the beautiful feature wall in the restaurant which uses ten different materials set at various depths to create a stunning relief effect.

Open pockets in this feature wall provide display space and some have glazed panels looking through to adjacent rooms.

Additional items supplied included, the library bookcase and community table, TV walls and work stations. The complexity of the joinery and range of materials used on this project highlights the skills and expertise of our time-served cabinet makers.



FOREST CONTRACTS
contract & bespoke furniture

LONDON HEATHROW
NOVOTEL HOTEL



LONDON
ONE 10 GYM



Recognised as one of London's best Spin Studios, One 10 kick started a cycling revolution in the city. The pay-as-you-go boutique studio is home to high energy spinning classes imagined by Team GB's Tim Benjamin.

Forest Contracts was proud to supply the bespoke joinery for their first studio on Baker Street, including a sleek retail and coffee shop upstairs, and changing facilities in the basement. All furniture was made from high quality Birch Face plywood, Grey Valchromat and Corian, creating a light Scandinavian feel.



FOREST CONTRACTS
contract & bespoke furniture

LONDON
ONE 10 GYM



LONDON
ONE ALDWYCH



An exquisite 5-Star hotel recently refurbished to evoke the style of an elegant, modern Parisian residence.

Forest Contracts provided the bespoke fitted wardrobes and dressing rooms throughout the renovation, which included utilising some of the existing wardrobe doors at the client's request.

The Suite rooms have kitchenette units housing mini fridges and catering facilities.

LONDON
ONE ALDWYCH



ST JOHN'S SOLIHULL
VOCO HOTEL



A modern and stylish hotel in the old market town of Solihull, with thoughtfully designed rooms in relaxing tones.

Forest Contracts designed and supplied painted classic shaker style headboards and TV panelling, and light oak free standing bedsides, desks and wardrobes, making these rooms a calming place to rest.



FOREST CONTRACTS
contract & bespoke furniture

ST JOHN'S SOLIHULL
VOCO HOTEL



LONDON
THE WESTBOURNE



The Westbourne is a contemporary boutique hotel located near Hyde Park. Forest Contracts supplied the joinery for the 96 bedrooms including the vanity units and the public areas.

The bedroom furniture is manufactured in walnut veneer with contrasting laminate drawer fronts. The public areas continue the dark timber feel with solid walnut nosing to the bar front, and book-matched effect wall panelling. The inclusion of upholstered panels and specialist feature laminates enhances the 'premium' feel the client requested.



FOREST CONTRACTS
contract & bespoke furniture

LONDON
THE WESTBOURNE



FOREST CONTRACTS
contract & bespoke furniture

www.forestcontracts.co.uk
info@forestcontracts.co.uk

LONDON
WESTOVER HILL



Located on the outskirts of Hampstead Heath, this luxury six bedroomed house was completely renovated.

Forest Contracts is especially proud of the high-quality bespoke joinery supplied for the bedrooms, walk-in dressing rooms, dining room and bathrooms. The developer requested the highest quality materials, most notably in the master bedroom, which includes a large walk in wardrobe in beautiful American walnut veneer with floor to ceiling storage and integral lighting.



FOREST CONTRACTS
contract & bespoke furniture

LONDON
WESTOVER HILL



EUSTON
HILTON HOTEL



Located close to Euston and Kings Cross stations, this grade II Victorian-era hotel is extremely popular with travellers exploring or working in London.

Forest Contracts provided joinery for all 167 bedrooms, including Standard Double, Deluxe and Family Superior guest rooms.

Referencing the building's heritage, the furniture was designed in a distinctive, traditional style. Slim brass frames are integrated into the freestanding items, adding a touch of elegance to the room, whilst the dark stained timber evokes a timeless feel.

EUSTON
HILTON HOTEL



HOLBORN
THE HOXTON



In the heart of Holborn, a stone's throw from London's West End is The Hoxton, part of the brand created by the renowned Ennismore hospitality developer and operator.

The hotel interior is inspired by the diversity of the streets that surround it and the originality of the guests that visit.

Forest Contracts proudly supplied the bespoke joinery for the reception counter, waiter stations and banquette seating.

Using dark stained walnut veneer, blackened steel and subtle brass trims, a truly original space was created. Aged copper and Arabescato marble worktops give the furniture an established feel and a timeless presence that will improve with age.

HOLBORN
THE HOXTON



SHOREDITCH
THE CURTAIN HOTEL



This nine storey new build hotel is located on the site of a former 1970's office block in the heart of Shoreditch.

Forest Contracts provided the Reception Counter, Guest room Vanities and Bathroom Vanity units, and the unusual tattoo parlour joinery for this project.

The hotel has since become an iconic building and destination in this creative borough of Hackney for travellers and locals.



FOREST CONTRACTS
contract & bespoke furniture

SHOREDITCH
THE CURTAIN HOTEL



CANARY WHARF
CIVIL AVIATION AUTHORITY



Forest Contracts manufactured and installed the joinery for the library, post room and communal work areas at the offices of the UK's specialist aviation regulator, the Civil Aviation Authority.

Full height slatted partition walls in Oak Laminat help define the Library area and create a private space for study. A similar slatted detail was used elsewhere in the scheme, most notably to the top of the booth seating.



FOREST CONTRACTS
contract & bespoke furniture

CANARY WHARF
CIVIL AVIATION AUTHORITY



LONDON CITY AIRPORT
COURTYARD *by* MARRIOTT



Forest Contracts were proud to be part of this exciting new build, located just 5 minutes away from London City Airport.

We manufactured and installed joinery for the public areas which included the bar and restaurant, reception pods, room divider screens and fixed seating. In addition, we supplied the vast decorative ceiling rafters which help break up the open space.



FOREST CONTRACTS
contract & bespoke furniture

LONDON CITY AIRPORT
COURTYARD by MARRIOTT



PARK ROYAL
HAMPTON *by* HILTON



Located close to Park Royal Underground station, this hotel gives its guests easy access to the heart of London.

We manufactured and Installed all the joinery within the public areas behind the Grade-II listed façade.

Work included the bar & reception area, hot & cold buffets, lounge area and meeting rooms.

PARK ROYAL
HAMPTON *by* HILTON



HEATHROW AIRPORT
COURTYARD *by* MARRIOTT



Forest Contracts manufactured and installed bespoke joinery and seating for the main ground floor public areas, first floor conference area and 6th floor Sky Bar including reception pods, bars, buffet units, bookshelf units and fixed seating.



FOREST CONTRACTS
contract & bespoke furniture

HEATHROW AIRPORT
COURTYARD by MARRIOTT



GET IN TOUCH

Darren Taylor

Sales Director

darren@forestcontracts.co.uk

07768 403763

www.forestcontracts.co.uk

Forest Contracts Ltd
Maidens Industrial Unit
High Easter
Chelmsford
Essex
CM3 1HU
01245 231360

Forest Contracts Ltd
Unit 2, The Innovation Centre
Conyngam Hall
Knaresborough
North Yorkshire
HG5 9AY
01423 799112



FOREST CONTRACTS
contract & bespoke furniture

GET IN TOUCH

Oliver Bullock

Sales

oliver@forestcontracts.co.uk

07760 660929

www.forestcontracts.co.uk

Forest Contracts Ltd
Maidens Industrial Unit
High Easter
Chelmsford
Essex
CM3 1HU
01245 231360

Forest Contracts Ltd
Unit 2, The Innovation Centre
Conyngnam Hall
Knaresborough
North Yorkshire
HG5 9AY
01423 799112



FOREST CONTRACTS
contract & bespoke furniture